



ASHLEY
SLING
INC.



WESTERN & MARINE BLOCKS

With Product Warnings and Application Information

Correct Ordering of Western Blocks

IMPORTANT

Helpful Information and Recommended Procedure for the Correct Ordering of Western Blocks

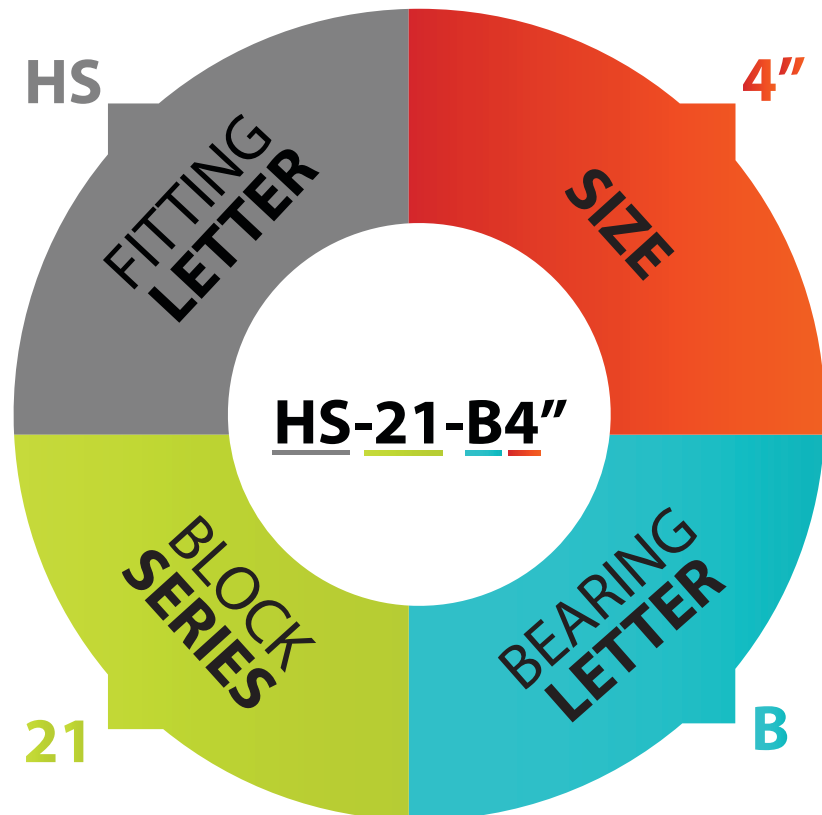
In selecting blocks, the governing consideration should be the load to be handled, rather than diameter or strength of the rope they will support. In multiple sheave blocks, the load is distributed among several parts of the rope, whereas the hooks or shackles on the blocks have to support the entire load. It is not practical to make double blocks twice as strong and triple blocks three times as strong as single blocks, since they would be too heavy and needlessly expensive for general use.

WHEN ORDERING, ALWAYS SPECIFY:

- Letter of Fitting,
- Block Series,
- Letter of Bearing, and
- Size.

EXAMPLE:

For ordering a 4" Single Wood Block with Loose Side Latch Hook, Common Iron Bearing, simply specify as follows:



If blocks are not shown with type of fitting you require, simply choose letter corresponding to your fitting need and insert where "HS" appears in the above example.

Unless otherwise specified, all material will be furnished in galvanized finish.

All certified single blocks are proof tested to twice the Resultant Safe Working Load and marked with a working load equal to one half the resultant load. Double blocks are tested to twice the Resultant Safe Working Load and marked with a working load equal to the resultant load.

All blocks except snatch blocks are furnished with becket. Blocks without becket on special order only.

When blocks are used for heavy loads and fast hoisting, we strongly recommend roller or bronze bearings in the sheaves. For wire rope blocks, cast steel sheaves are recommended.

SPECIAL CUSTOM-MADE BLOCKS. . .

We manufacture a large number of Special Blocks to meet particular requirements. Specify type block, diameter of sheave, diameter of manila or wire rope to be used, and weight of load.



The Western Block Line

**If today's technology was available over a century ago . . .
 . . . this is the way Western Blocks would have been produced.**

- Bolt style center pin with lock washer and staked nut
- No straps
- Laser burned side plates
- Every block permanently stamped with the following:
 - Working Load Limit
 - Block and Rope Size

385 WOOD SHELL MANILA ROPE SNATCH BLOCK

- New stock numbers
- New higher working load limits
- Painted or galvanized steel
- Laser cut side plate opens for insertion of rope
 - Incorporates exclusive bolt retaining spring to assure no lost bolts, plus utilizes secondary retaining pin
- Bronze bushed sheaves with larger bearing diameter for extended block life
- Lubricated center pin
- 10" and 12" sizes utilize steel sheaves



301-302-303 STEEL SHELL BLOCKS FOR MANILA ROPE

- Same stock numbers
- Same working load limits
- Same fittings available
- Laser cut side plates
- Galvanized steel
- Grade 5 bolts secured with lock washers and staked nuts
- Bronze bushed sheaves with larger bearing diameter for extended block life
- New style hanger for fitting attachment



261-262-263 STANDARD STEEL SHELL BLOCKS FOR MANILA ROPE

- Same stock numbers
- Same working load limits
- Same fittings available
- Laser cut side plates
- Painted steel
- Grade 5 bolts secured with lock washers and staked nuts
- Bronze bushed sheaves with larger bearing diameter for extended block life



390 STEEL SHELL MANILA ROPE SNATCH BLOCK

- New stock numbers
- New higher working load limits
- Painted or galvanized steel
- Laser cut side plate opens for insertion of rope.
 - Incorporates exclusive bolt retaining spring to assure no lost bolts, plus utilizes secondary retaining pin
- Bronze bushed sheaves with larger bearing diameter for extended block life
- Lubricated center pin
- 10" and 12" sizes utilize steel sheaves



411-412-413 STEEL SHELL BLOCK FOR SYNTHETIC ROPE

- Same stock numbers
- Same working load limits
- Same fittings available
- Laser cut side plates
- Painted steel
- Grade 5 bolts secured with lock washers and staked nuts
- Bronze bushed sheaves with larger bearing diameter for extended block life



261-262 5" STEEL SHELL BLOCKS FOR WIRE ROPE

- Same stock numbers
- Same working load limits
- Same fittings available
- Laser cut side plates
- Painted steel
- Grade 5 bolts secured with lock washers and staked nuts
- Bronze bushed sheaves with larger bearing diameter for extended block life



310 - 135 PAINTER'S SUPPLY BLOCK FOR MANILA ROPE

- Same stock numbers
- Same working load limits
- Same fittings available
- Laser cut side plates
- Galvanized steel
- Grade 5 bolts secured with lock washers & staked nuts
- Replaceable wood bumpers
- Bronze bushed sheaves with larger bearing diameter for extended block life



21-22-23 WOOD SHELL BLOCKS FOR MANILA ROPE

- Same stock numbers
- Same working load limits
- Same fittings available
- Laser cut side plates
- Galvanized steel
- Grade 5 bolts secured with lock washers & staked nuts
- Replaceable wood bumpers
- Bronze bushed sheaves with larger bearing diameter for extended block life.



641- 642 DIAMOND PATTERN & 661-662 OVAL PATTERN BLOCKS

- Same stock numbers
- Same working load limits
- Same fittings available
- Laser cut side plates
- Grade 5 bolts secured with lock washers & staker nuts
- All sizes feature bronze bushed steel sheaves with larger bearing diameter for extended block life
- Lubricated center pin available upon request
- New style hanger for fitting attachment
 - Available with hanger only (on fitting) upon request



Regular Wood Blocks for Manila Rope

- Laser cut side plates
- Grade 5 bolts secured with lock washers and staked nuts.
- Bronze bushed sheaves with larger bearing diameter for extended block life.
- Becketts furnished on all blocks.
- For reeving information, see page 385.
- Meets or exceeds all requirements of ASME B30.26 including identification, ductility, design factor, proof load and temperature requirements. Importantly, these blocks meet other critical performance requirements including fatigue life, impact properties and material traceability, not addressed by ASME B30.26.



HS-21-B
Regular Wood Block
for Manila Rope

HS-21B, 22B, 23B

Block Size (in.)	Fitting	Single Sheave 21 B Stock No.	Double Sheave 22 B Stock No.	Triple Sheave 23 B Stock No.
4	HS	603831	604634	605438
5	HS	603859	604652	605456
6	HS	603877	604670	605474
8	HS	603911	604714	605517
4	N	606437	606838	607230
5	N	606455	606856	607258
6	N	606473	606874	607276
8	N	606516	606918	607310
4	S	610039	611635	613232
5	S	610057	611653	613250
6	S	610075	611671	613278
8	S	610119	611715	613312

Fitting Type: HS-Latch Hook; N-Swivel Hook with Latch; S- Round Pin Anchor Shackle

HS-21B, 22B, 23B

Block Size (in.)	Sheave Dimensions (in.)			Manila Rope Size (in.)	Working Load Limit (lbs.)*			Weight Each (lbs.)		
	Outside Diam.	Rim Thickness	Center Pin Diam.		21 Single	22 Double	23 Triple	21 Single	22 Double	23 Triple
4	2.25	.63	.38	1/2	1000	1400	1800	1.75	3.00	4.00
5	3.00	.75	.38	5/8	1200	1800	2400	3.25	5.60	6.50
6	3.50	1.00	.50	3/4	1800	2500	3200	5.00	8.50	11.50
8	4.75	1.13	.63	7/8 - 1	2800	3800	4800	13.00	14.00	21.50

*Ultimate Load is 4 times the Working Load Limit



Steel Shell Blocks for Manila Rope

- Laser cut side plates
- Grade 5 bolts secured with lock washers and staked nuts.
- Bronze bushed sheaves with larger bearing diameter for extended block life.
- New style hanger for fitting attachment.



P-303-B
Steel Shell Block
for Manila Rope

P-301B, 302B, 303B

Block Size (in.)	Fitting	Single Sheave 301 B* Stock No.	Double Sheave 302 B* Stock No.	Triple Sheave 303 B* Stock No.
4	HS	680971	681373	681774
6	HS	680999	681391	-
8	HS	681015	681417	681818
4	N	682639	683031	683433
6	N	682675	683077	683479
8	P	691111	692717	694314

*Bearing Code: B- Self Lubricating Bronze Bushed. Fitting Type: HS- Latch Hook; N- Swivel Hook with Latch; P- Screw Pin Anchor Shackle

P-301B, 302B, 303B

Block Size (in.)	Sheave Size (in.)		Manila Rope Size (in.)	Working Load Limit (lbs.)*			Weight Each (lbs.)		
	Outside Diam.	Rim Thickness		Single	Double	Triple	Single	Double	Triple
4	2.25	.63	1/2	1100	1600	2200	2.25	3.75	5.00
6	3.50	1.00	3/4	2000	3300	4000	5.50	9.25	12.50
8	4.75	1.13	1	3300	5100	7000	10.00	16.50	22.00

*Ultimate Load is 3.5 times the Working Load Limit

Western Standard Steel Blocks



HS-262 Double

Loose Side Hooks with Latch for Manila Rope

- Laser cut side plates
- Grade 5 bolts secured with lock washers and staked nuts.
- Bronze bushed sheaves with larger bearing diameter for extended block life.

HS-262 Double, HA-261, 262, 263

Block Size (in.)	Fitting	Manila Rope Size (in.)	Sheave Size (in.)		261 B Stock No.	262 B Stock No.	263 B Stock No.	Working Load Limit (lbs.)*			Weight Each (lbs.)		
			Outside Diam.	Rim Thickness				261 Single	262 Double	263 Triple	261 Single	262 Double	263 Triple
4	HS	1/2	2.25	.63	666826	666229	667228	900	1400	1800	1.38	3.21	3.25
5	HS	5/8	3.00	.75	666844	666247	-	1200	1800	-	2.25	3.88	-
6	HS	3/4	3.50	1.00	666862	666265	-	1800	2500	-	3.75	6.00	-
8	HS	7/8 - 1	4.75	1.13	666906	666309	667308	2800	3800	4800	7.13	10.75	14.75

*Ultimate Load is 3 times the Working Load Limit. Fitting Type : HS - Latch Hook



N-411B

Blocks for Synthetic Fiber Rope with loose swivel hooks

- These blocks are built to carry the increased loads of synthetic fiber ropes.
- All hooks are heat-treated alloy steel.
- You can now use a smaller size rope, and in turn, a smaller block, providing capacities which were previously not possible.
- Meets or exceeds all requirements of ASME B30.26 including identification, ductility, design factor, proof load and temperature requirements. Importantly, these blocks meet other critical performance requirements including fatigue life, impact properties and material traceability, not addressed by ASME B30.26.

N-411B, 412B, 413B

Block Size (in.)	Fitting	411 B* Stock No.	412 B* Stock No.	413 B* Stock No.
4	S	755105	755301	755506
6	S	755123	755329	755524
4	N	757103	757309	757504
6	N	757121	757327	757522

*Bearing Code: B- Self Lubricating Bronze Bushed. Fitting Type: S- Round Pin Anchor; N- Swivel Hook Latch

N-411B, 412B, 413B

Block Size (in.)	Fitting	Sheave Size			Synthetic Rope Size (in.)	Working Load Limit (lbs.)*			Weight Each (lbs.)		
		Outside Diam.	Rim Thickness	Center Pin Diam.		Single	Double	Triple	Single	Double	Triple
4	S	2.25	.62	.38	1/2	2000	3000	3000	3.00	4.00	6.00
6	S	3.50	1.00	.50	3/4	3000	7000	8000	6.25	10.00	14.00
4	N	2.25	.62	.38	1/2	2000	3000	3000	3.00	4.00	6.00
6	N	3.50	1.00	.50	3/4	3000	4000	6000	6.25	10.00	14.00

*Ultimate Load is 4 times the Working Load Limit



HW-261B

- For 3/8" Diameter Wire Cable
- Sheave Size: 3 x 3/4 x 3/8

HW-262B



HW-261 HW-262 5" Steel Blocks

Block Size (in.)	Fitting	Block Stock No.	Catalog No.	Bearing Type	Wire Rope Size (in.)	Working Load Limit (lbs.)*	Weight Each (lbs.)
5	H	665444	HW261-B	Bronze Bushed	3/8	1200	2
5	H	665462	HW262-B	Bronze Bushed	3/8	1800	4

*Ultimate Load is 3 times the Working Load Limit. Fitting Type : H - Swivel Hook

STEEL SHELL & WOOD SHELL



T-390
Painted



T-390
Galvanized



T-385
Painted



T-385
Galvanized

- New style blocks feature higher working load limits.
- Painted or Galvanized steel with replaceable wood bumpers.
- Laser cut side plate opens for insertion of wire rope.
- Incorporates exclusive bolt retaining spring to assure no lost bolts, plus utilizes secondary retaining pin.
- Bronze bushed sheaves with larger bearing diameter for extended block life.

- Utilizes Crosby "N" style hooks with integrated latch.
- Lubricated center pin.
- 10" and 12" sizes utilize steel sheaves.
- Meets or exceeds all requirements of ASME B30.26 including identification, ductility, design factor, proof load and temperature requirements. Importantly, these blocks meet other critical performance requirements including fatigue life, impact properties and material traceability, not addressed by ASME B30.26.



385B, 390B Blocks

Block Size (in.)	Fitting	Wood Shell		Steel Shell	
		385-B* Stock No. S.C.	385-B* Stock No. Galv.	390-B* Stock No. S.C.	390-B* Stock No. Galv.
6	T	702000	702108	702216	702324
8	T	702009	702117	702225	702333
10	T	702018	702126	702234	702342
12	T	702027	702135	702243	702351
6	J	702036	702144	702252	702360
8	J	702045	702153	702261	702369
10	J	702054	702162	702270	702378
12	J	702063	702171	702279	702387
6	G	702072	702180	702288	702396
8	G	702081	702189	702297	702405
10	G	702090	702198	702306	702414
12	G	702099	702207	702315	702423

*Bearing Code : B - Self Lubricating Bronze Bushed; C - Common Iron; R - Roller Bearing
Fitting Type : T - Swivel Latch Hook; J - Yoke and Oblong Swivel Eye; G - Yoke and Swivel Shackle

385B, 390B Blocks

Block Size (in.)	Sheave Size (in.)			Manila Rope Size (in.)	Drop Side	
	Outside Diam.	Rim Thickness	Bearing Diameter		Working Load Limit (Tons)*	Weight Each (lbs.*)
6	3.00	.88	.75	3/4 - 7/8	2	7
8	4.00	1.38	1.00	1 - 1-1/8	4	13
10	6.00	1.62	1.50	1-1/4	8	28
12	8.00	1.62	1.50	1-1/2	8	34

*Ultimate Load is 4 times the Working Load Limit.

Western Blocks for Manila Rope



T-350-C
Gin Block

Gin Blocks for Manila Rope

- For light hoisting by Roofers and Contractors.
- Furnished with drop forged swivel latch hooks.

350C, 350B, 350R

Block Size (in.)	Fitting	Gin Block Stock No.			Sheave Size (in.)			Manila Rope Size (in.)	Working Load Limit (lbs.)*	Weight Each (lbs.)
		T-350-B	T-350-R	T-350-C	Outside Diam.	Rim Thickness	Bearing Diam.			
8	T	710403	710207	710001	8.00	1.25	.75	7/8	1000	9.0
10	T	710421	710225	710029	10.00	1.25	.88	1	1000	9.8
12	T	710449	710243	710047	12.00	1.38	.88	1	1000	12.7

*Ultimate Load is 3 times the Working Load Limit.

Bearing Code : B - Self Lubricating Bronze Bushed; R - Roller Bearing; C - Common Iron
Fitting Type : T - Swivel Latch Hook



HS-130-B
Single

Painter's Supply Blocks for Manila Rope

- Furnished in Bronze Bushed.
- For 3/4" Manila Rope.
- Steel Parts are Galvanized.
- Furnished with Loose Side Hooks with Latch or Shackle.
- Meets or exceeds all requirements of ASME B30.26 including identification, ductility, design factor, proof load and temperature requirements. Importantly, these blocks meet other critical performance requirements including fatigue life, impact properties and material traceability, not addressed by ASME B30.26.



HS-130B, HS-135B, P-135B

Block Size (in.)	Fitting	Single Sheave Blocks	Double Sheave Blocks	
		HS-130 B* Stock No.	HS-135 B* Stock No.	P-135 B* Stock No.
6	HS	601236	631034	-
6	HS	-	-	8004829

*Bearing Code : B - Self Lubricating Bronze Bushed
Fitting Type : HS - Latch Hook, P= Screw pin anchor shackle.

HS-130B, HS-135B, P-135B

Block Size (in.)	Sheave Size (in.)			Manila Rope Size (in.)	Resultant Working Load Limit (lbs.)*		Weight Each (lbs.)	
	Outside Diam.	Rim Thickness	Center Pin Dia.		130 Single	135 Double	130 Single	135 Double
					6	3.50	1.00	.75

*Ultimate Load is 4 times the Resultant Working Load Limit.

WESTERN & MARINE BLOCKS

DIAMOND & OVAL PATTERN REGULAR WIRE ROPE BLOCKS



T-641-B
Diamond Pattern
Wire Rope Block



661B
Oval Pattern
Wire Rope Block

- Laser cut painted side plates (can be furnished galvanized upon request).
- Grade 5 bolts secured with lock washers and staked nuts.
- All sizes feature bronze bushed steel sheaves with larger bearing diameter for extended block life.
- New style hanger for fitting attachment
- Available with hanger only (no fitting).
- For reeving information, see page 385.
- Meets or exceeds all requirements of ASME B30.26 including identification, ductility, design factor, proof load and temperature requirements. Importantly, these blocks meet other critical performance requirements including fatigue life, impact properties and material traceability, not addressed by ASME B30.26.



Diamond & Oval Pattern Regular Wire Rope Blocks

Block Size (in.)	Fitting	Diamond Pattern with Bronze Bushed Steel Sheaves		Oval Pattern with Bronze Bushed Steel Sheaves	
		641-B Single	642-B Double	661-B Single	662-B Double
4	T	781586	782193	791183	791593
6	T	781611	782219	791218	791619
8	T	781639	782237	791236	791637
10	T	781657	782255	791254	791655
4	S	785886	786199	795884	796197
6	S	785902	786206	795900	796204
8	S	785920	786224	795928	796222
10	S	785948	786242	795946	796240
6	J	782102	782503	791502	791904
8	J	782120	782521	791520	791922
10	J	782148	782549	791548	791940
6	E	782004	782406	791307	791708
8	E	782022	782424	791325	791726
10	E	782040	782442	791343	791744

*Fitting Type : T - Hook with Latch; S - Round Pin Shackle; J - Oblong Eye; E - Swivel Shackle Eye

Diamond & Oval Pattern Regular Wire Rope Blocks

Block Size (in.)	Sheave Size (in.)		Wire Rope Size (in.)	Working Load Limit (Tons)*		Weight Each (lbs.)	
	Outside Diam.	Rim Thickness		641 661 Single	642 662 Double	641 661 Single	642 662 Double
4	4	3/4	3/8	1	2	8	11
6	6	1	3/8	3	4	15	21
8	8	1-1/4	5/8	4	6	28	41
10	10	1-1/4	5/8	4	7	38	60

*Ultimate Load is 4 times the Working Load Limit

McKissick® Trawl & Try Net Blocks



J-452
Oblong Swivel
Eye

Double Rig Trawl Blocks

- Steel sheave with flame hardened groove, for maximum wear under abrasive conditions.
- Double row, permanently sealed tapered roller bearings.
- Pressure lubrication throughout.
- All steel construction.
- Hot Dip galvanized.



J452 Blocks

Sheave Dia. and Block No.	452 Stock No.	Working Load Limit (Tons)*	Weight Each (lbs.)	Sheave Dimensions (in.)	
				Outside Diam.	Rim Thickness
8" J-452	130655	10	48	8	3.75
12" J-452	130673	10	85	12	3.75
16" F-452	130682	20	116	16	3.75
18" J-452	2015467	25	300	18	5.44
22" F-452	130708	30	240	22	3.75

*Ultimate Load is 4 times the Working Load Limit. NOTE: 18" J-452 utilizes a Manganese Steel Sheave that is not flame hardened.

TRY NET BLOCKS



F-453 6"



F-454 6"



J-454 8"

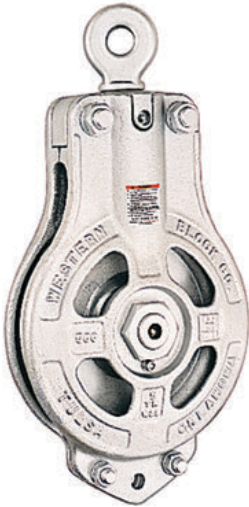
- Forged steel swivel eyes.
- Hot Dip galvanized.
- 6" 453 - Pressed steel side plates with flared edges. Figure 8 grooved, self-lubricating bronze bushed sheaves, with pressure lube fittings. 453 has an extra wide throat opening to allow fittings to pass through.
- 6" 454 - Forged side plates designed to eliminate rope jamming. Wide throat opening and pressure lube fitting on sheave and eye fitting.
- 8" 454 - Forged steel side plates designed to eliminate possibility of rope jamming. Furnished with sealed tapered bearings. Flame hardened forged steel sheaves for wear resistance.

453, 454, Blocks

Sheave Dia. and Block No.	Bearing Type	Try Net Block Stock No.	Working Load Limit (Tons)*	Weight Each (lbs.)	Sheave Dimensions (in.)	
					Outside Diameter	Rim Thickness
6" F-453	Bronze Bushed	769886	5	35	6	2-3/4
6" F-454	Needle Bearing	2001763	5	23	6	2-3/4
8" J-454	Tapered Bearing	130726	10	36	8	2-7/8

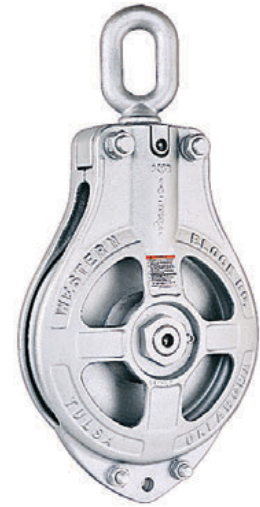
*Ultimate Load is 4 times the Working Load Limit.

CARGO HOISTING BLOCKS



E-566
with Drilled
Swivel Eye

- Block is galvanized.
- Blocks 14" and larger have flame-hardened roll forged sheaves that assure greater wire life.
- Roll forged sheave is fitted closely into mortise of shell so wire cannot jam between sheave and shell.
- Available for 3/4" or 1" wire.
- Block is fitted with tapered roller bearings which take both load and side thrusts and hold sheave central so it cannot chafe or wear on the sides.
- Tapered Roller bearing with neoprene seals and stainless steel center pin provide long life and trouble-free service.
- Stainless steel center pin has recessed nuts with lock washers.
- Swivel fitting has permanently sealed thrust bearing.
- Pressure lubrication fittings are standard on both center pin and swivel.
- Individually Proof Tested at 4 times Working Load or 2 times Resultant Load.
- A.B.S. recognized load test certificates are furnished.
- The Working Load for cargo hoisting blocks is the line pull.



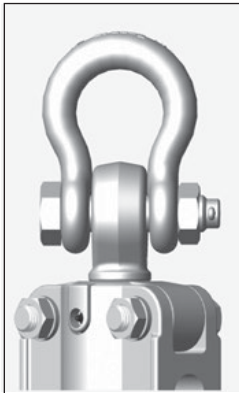
J-566
with Oblong
Swivel Eye



566 Hoisting Blocks

Sheave Size (in.)	Block No.	566 Stock No.	Working Load Limit (Tons)*	Wire Rope Size (in.)	Weight Each (lbs.)
12	E-566	775003	5	3/4	95
12	J-566	775209	5	3/4	95
12	G-566	775405	5	3/4	95
12	K-566	775600	5	3/4	95
12	QG-566	775806	5	3/4	95
12	QK-566	776002	5	3/4	95
14	E-566	775058	10	3/4	100
14	J-566	775254	10	3/4	100
14	QG-566	775450	10	3/4	100
14	QK-566	775655	10	3/4	100
14	PG-566	775851	10	3/4	100
14	PK-566	776057	10	3/4	100
14	E-566	775067	10	1	100
14	J-566	775263	10	1	100
14	QG-566	775469	10	1	100
14	QK-566	775664	10	1	100
14	PG-566	775860	10	1	100
14	PK-566	776066	10	1	100
16	E-566	776609	10	3/4	130
16	J-566	776672	10	3/4	130
16	QG-566	776681	10	3/4	130
16	QK-566	776690	10	3/4	130
16	PG-566	776707	10	3/4	130
16	PK-566	776716	10	3/4	130
16	E-566	752956	10	1	130
16	J-566	752965	10	1	130
16	QG-566	752974	10	1	130
16	QK-566	752983	10	1	130
16	PG-566	752992	10	1	130
16	PK-566	753009	10	1	130

*Working Load equals maximum single line pull. Resultant Load equals 2 times single line pull. Ultimate Load equals 5 times the Resultant Load.



QG
Swivel Bolt Type
Shackle



J
Oblong Swivel
Eye



QK
Upset Swivel
Bolt Type



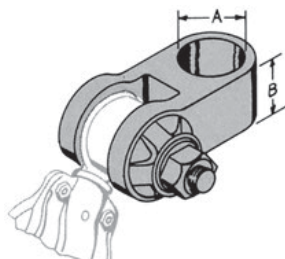
U
Goose Neck
Swivel Eye



Z
Non-toppling
Guard

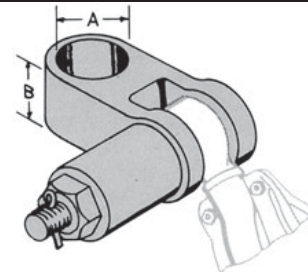
HEEL AND LEAD BLOCK ADJUSTER FITTINGS

(For use with E-566 Cargo Blocks)



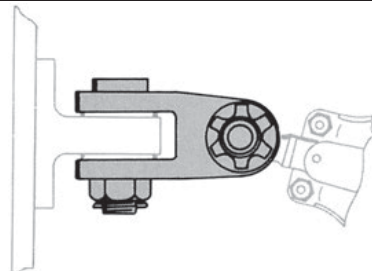
No. 572

Self-adjuster Fitting with Tension Pin, Cup Spring and Washers.



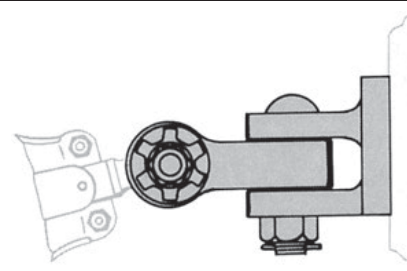
No. 573

Self-adjuster Fitting with Tension Pin, Coil Spring, Cup and Washers.



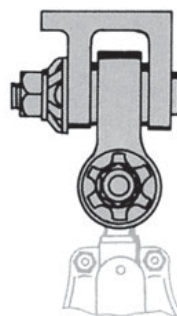
No. 574

Self-adjuster Fitting with Tension Pin, Cup Spring and Washers, and King Pin to fit Pad Eye (can also be furnished with 2 Tension Pins).



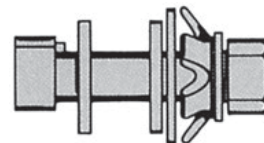
No. 576

Self-adjuster Fitting with Pad Jaw, King Pin, Tension Pin, Cup Spring and Washers.



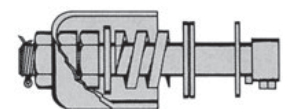
No. 575

Self-adjuster Fitting with Tension Pin, Cup Spring, and Washer.



No. 571

Tension Pin with Cup Spring, Nut and Washers.



No. 570

Tension Pin with Coil Spring, Nut and Washers, Cotter and Cup.

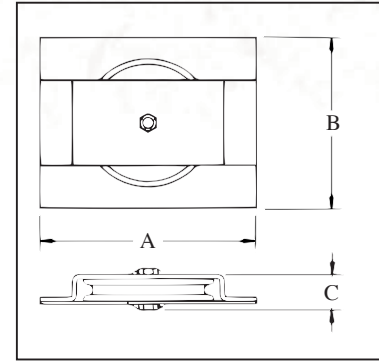
When ordering Specify: "A" - Pin Diameter, "B" -Height of Fitting, and Tension Pin Diameter.



S-600S
Horizontal Lead Block

Horizontal Lead Blocks

- Available painted or galvanized.
- Fitted with steel sheaves.
- Self Lubricated Bronze Bushed.



S-600S / G-600S

Sheave Diameter (in.)	600 Series Stock No.		Resultant Working Load Limit (Tons)*	Wire Rope Size (in.)	Weight Each (lbs.)	Dimensions (in.)		
	S-600-S Painted	G-600-S Galv.				A	B	C
6	771999	772006	2	3/8	10.0	11.00	6.38	2.50
8	772015	772024	2-1/2	1/2	21.0	13.00	8.50	3.00
10	772033	772042	3	5/8	36.0	15.00	10.50	3.25
12	772051	772060	4	3/4	61.0	17.00	12.50	4.00
14	772079	772088	5	7/8	96.0	19.00	14.50	4.00

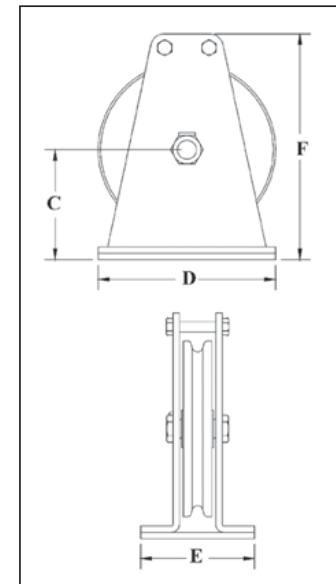
*Ultimate Load is 4 times the Resultant Working Load Limit.



G-601S
Vertical Lead Block

Vertical Lead Blocks

- Available painted or galvanized.
- Fitted with steel sheaves.
- Self Lubricated Bronze Bushed.



S-601S / G-601S

Sheave Diameter (in.)	601 Series Stock No.		Resultant Working Load Limit (Tons)*	Wire Rope Size (in.)	Weight Each (lbs.)	Dimensions (in.)			
	S-601-S Painted	G-601-S Galv.				C	D	E	F
6	772195	772202	2	3/8	10.00	3.50	6.00	5.50	7.00
8	772211	772220	2-1/2	1/2	24.50	4.88	8.00	6.75	9.75
10	772239	772248	3	5/8	31.50	6.38	10.00	7.75	11.75
12	772257	772266	4	3/4	60.00	7.25	12.00	6.00	15.25
14	2003424	2003425	5	7/8	98.00	8.75	14.00	9.00	18.00

*Ultimate Load is 4 times the Resultant Working Load Limit.

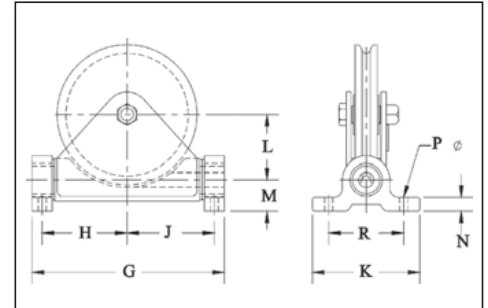
Western Lead Blocks



G-602S
Flag Lead Block

Flag Blocks

- Base plates are drilled.
- Available painted or galvanized.
- Fitted with steel sheaves.
- Self-lubricated Bronze Bushed.



S-602S / G-602S Flag Blocks

Sheave Diameter (in.)	602 Series Stock No.		Resultant Working Load Limit (Tons)*	Wire Rope Size (in.)	Weight Each (lbs.)	Dimensions (in.)								
	S-602-S Painted	G-602-S Galv.				G	H	J	K	L	M	N	P	R
6	772391	772408	2	3/8	17.00	9.00	3.75	3.88	6.25	2.88	1.62	.75	.56	4.75
8	1420885	772426	2-1/2	1/2	31.50	11.38	4.75	5.12	7.00	3.62	2.00	1.00	.69	5.50
10	772435	772444	3	5/8	42.00	13.38	5.69	6.06	7.00	4.62	2.00	1.00	.69	5.50
12	772453	772462	4	3/4	115.00	17.25	7.25	7.75	10.75	5.38	3.12	1.38	.81	7.50
14	772471	-	5	7/8	136.50	19.25	8.50	8.75	10.75	6.50	3.12	1.38	.81	7.50

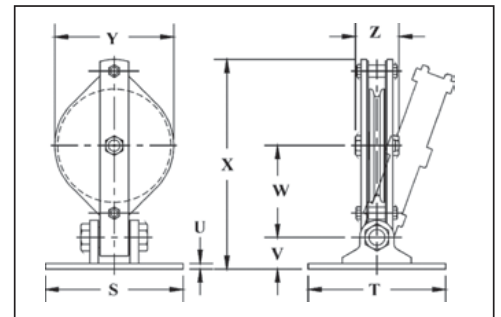
*Ultimate Load is 4 times the Resultant Working Load Limit.



S-603S
Hinged Lead Block

Hinged Lead Blocks

- Base plates are not drilled.
- Available painted or galvanized.
- Self-lubricated Bronze Bearings.



S-603S / G-603S Hinged Lead Blocks

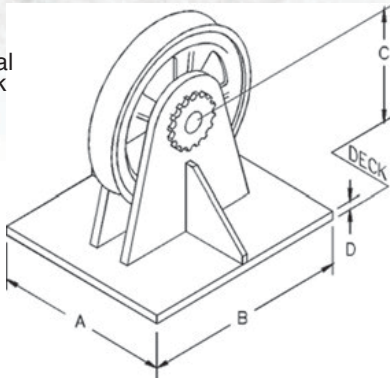
Sheave Diameter (in.)	603 Series Stock No.		Resultant Working Load Limit (Tons)*	Wire Rope Size (in.)	Weight Each (lbs.)	Dimensions (in.)							
	S-603-S Painted	G-603-S Galv.				S	T	U	V	W	X	Y	Z
6	772596	772603	2	3/8	30.00	6.00	4.50	.50	2.00	5.81	12.80	6.75	3.25
8	772612	772621	2-1/2	1/2	34.00	8.00	6.75	.38	2.62	6.56	15.48	9.00	3.75
10	772630	772649	3	5/8	45.00	12.00	12.00	.50	2.75	8.00	18.25	10.75	4.38
12	772658	772667	4	3/4	75.00	12.00	12.00	.50	2.75	9.50	18.63	13.00	4.58
14	772676	772685	5	7/8	100.00	12.00	12.00	.50	2.75	10.75	20.63	15.00	4.81

*Ultimate Load is 4 times the Resultant Working Load Limit.

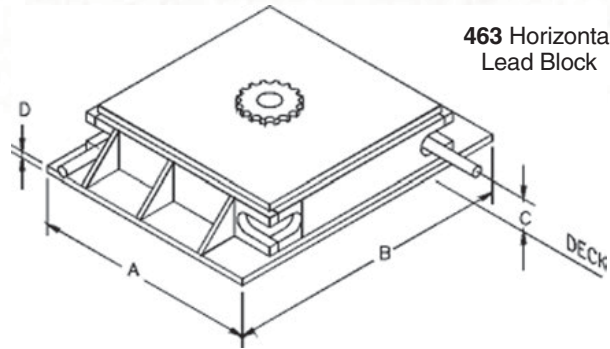
WESTERN & MARINE BLOCKS

McKissick® Horizontal & Vertical Blocks

461 Vertical Lead Block



463 Horizontal Lead Block



Furnish the following important information when ordering:

- A, B and C dimensions.
- Line pull in pounds and degree of wrap.
- Line speed.
- Diameter of wire rope.
- Roller bearings, bronze bushings, or sealed double row tapered bearings.

Guide and control your deck lines with McKissick's deck-mounted wire rope blocks. Built to your specific requirements.

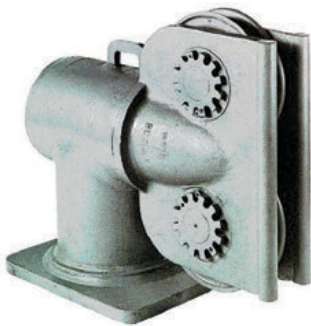
- Extra heavy construction, built to withstand breaking strength of indicated rope (XIP, IWRC).
- Flame-hardened sheaves, machined grooves for proper rope size.
- For special requirements contact Crosby.

461 Vertical & 463 Horizontal Lead Blocks

Figure No.	Lead Block Stock No.	Sheave Diameter (in.)	Standard Wire Rope Size (in.)	Weight Each (lbs.)	Dimensions (in.)			
					A	B	C	D
461-18	239753	18	7/8	500	12.00	20.00	11.00	1.50
461-24	131574	24	1-1/4	500	15.00	26.00	14.00	1.50
461-26	238120	26	1-1/2	660	16.00	28.00	15.00	1.50
461-36	148389	36	1-5/8	850	20.00	36.00	19.50	2.00
461-40	136285	40	2	2006	23.00	42.00	22.50	2.00
461-42	130753	42	2-1/2	4000	28.00	52.00	25.50	2.50
463-26	4440359	26	1	988	33.00	33.00	3.75	1.50
463-30	1404377	30	1-1/4	1225	37.00	37.00	3.50	1.50
463-36	146522	36	1-1/2	1900	43.00	43.00	3.50	1.50
463-42	1406525	42	1-3/4	2975	50.00	50.00	4.38	2.00
463-48	131583	48	2	3600	55.00	55.00	4.63	2.00
463-60	123164	60	2-1/2	6400	68.00	68.00	5.75	2.00

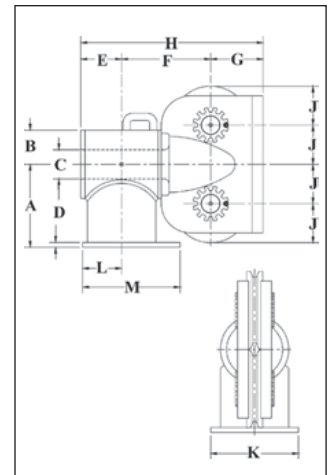
For custom orders contact our Block Hotline, (1-800-727-1555) or reference the special request form on pg 458.

457 Deck Mounted Anchor Fairleader



Deck Mounted Anchor Fairleader

- Barrel and sheaves equipped with sealed double row tapered bearings.
- Extra heavy construction, built to withstand breaking strength of indicated rope at 90 degree sheave wrap and 45 degree head swing.
- All bearings Alemite-lubricated.
- Custom Anchor Fairleader sets available.



457 Deck Mounted Anchor Fairleader

Figure No.	457 Stock No.	Sheave Diameter (in.)	Wire Rope Size (in.)	Weight Each (lbs.)	Dimensions (in.)											
					A	B	C	D	E	F	G	H	J	K	L	M
B-10-D	8073880	10	1	300	10.75	4.50	3.50	.75	5.00	10.13	6.75	21.88	5.06	9.50	4.50	11.00
B-12-D	8073924	12	1-1/4	600	12.75	5.00	5.00	.75	6.38	12.38	8.00	26.75	6.06	11.00	5.25	13.00
B-16-D	8073979	16	1-1/2	1300	17.00	7.00	6.00	1.00	8.44	17.75	10.75	36.94	8.06	18.00	8.00	20.00
B-20-D	8074022	20	1-3/4	2500	21.00	9.00	8.50	1.00	11.25	21.94	12.75	45.94	10.06	21.00	10.00	24.50
B-24-D	8074111	24	2	3600	25.25	11.00	10.00	1.25	12.75	26.50	14.75	54.00	12.06	23.00	11.00	27.00



NEW STYPE OVAL PATTERN CONSTRUCTION BLOCKS



Q-681-Z



Q-682-Z



Q-683-Z

- All blocks are galvanized.
- Sheave lubricated through pressure lube fitting in center pin.
- Assembled with self lubricated bronze bushing.
- Combines weight of regular oval blocks with strength of extra heavy oval blocks.
- Assembled with bolt type anchor shackle.
- Side plates are rounded to provide additional stiffness and reduce wear and chaffing of the rope.

Q-681-Z / Q-682-Z / Q-683-Z

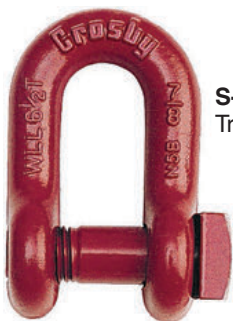
Block Size (in.)	Fitting	Stock No. Bronze Bushed Steel Sheaves		
		Q-681-Z	Q-682-Z	Q-683-Z
6	Q	760441	760665	-
6	Q	760452	760676	760812
8	Q	760463	760687	760823
10	Q	760474	760698	760834

Fitting Type : Q - Bolt Type Anchor Shackle

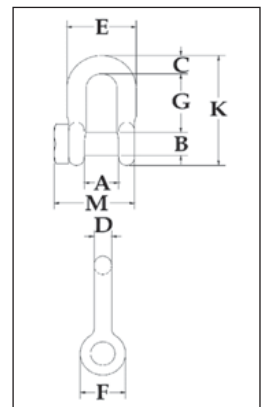
Q-681-Z / Q-682-Z / Q-683-Z

Block Size (in.)	Sheave Dimensions (in.)			Wire Rope Size (in.)	Working Load Limit (Tons)*			Weight Each (lbs.)		
	Outside Diam.	Rim Thickness	Center Pin Dia.		Single	Double	Triple	Single	Double	Triple
6	6	1.00	.75	3/8	3	4	-	15	28	-
6	6	1.00	.75	1/2	3	4	5	16	28	32
8	8	1.25	1.00	5/8	4	6	7	29	43	62
10	10	1.25	1.00	5/8	4	7	8	38	61	80

*Ultimate Load is 4 times the Working Load Limit. Bearing Code: Z - Self Lubricating Bronze Bushed with pressure lube fitting.



S-2131
Trawling Shackles



S-2131 Trawling Shackles

Nominal Shackle Size D (in.)	Working Load Limit (t)*	S-2131 Stock No.	Weight Each (lbs.)	Dimensions (in.)									Tolerance +/-	
				A	B	C	D	E	F	G	K	M	G	A
1/2	2	1018703	.75	.81	.63	.50	.50	1.81	1.19	1.63	3.09	2.22	.13	.06
5/8	3-1/4	1018721	1.24	1.06	.75	.63	.63	2.31	1.56	2.00	3.78	2.75	.13	.06
3/4	4-3/4	1018749	2.18	1.25	.88	.81	.75	2.75	1.88	2.38	4.50	3.25	.25	.06
7/8	6-1/2	1018767	3.28	1.44	1.00	.97	.88	3.19	2.13	2.81	5.25	3.69	.25	.06

*Ultimate Load is 4 times the Working Load Limit.

FOR MANILA OR WIRE ROPE BLOCKS

